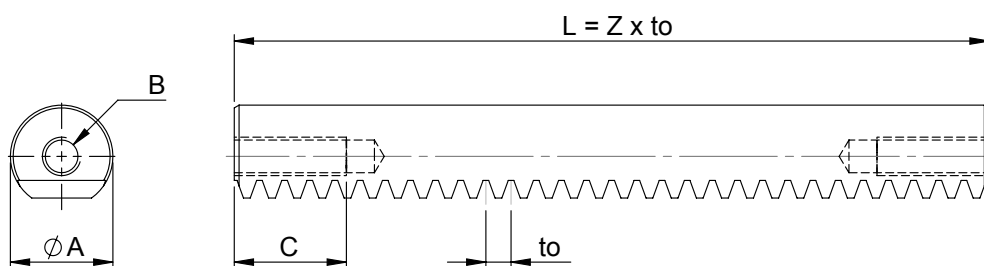
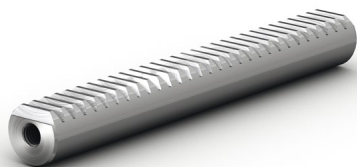


lean SL[®] Racks 5.m - 5.5 • Dimension sheet

lean SL[®] series gear racks are supported in sliding bushings. They are designed to transfer tensile and compressive forces. They cannot bear transverse forces. See the technical data on Page 120.



! The gear rack is symmetrical in construction. When a gear rack protection is used, the gear rack length increases accordingly. Have the theoretical lifespan calculated.

Always add the number of teeth "Z = _ _ _" to the article number.

lean SL® Rack	Unit	SL 5.m	SL 5.0	SL 5.1	SL 5.3	SL5.5
	A mm	ø 20 h6	ø 25 h6	ø 32 h6	ø 60 h6	ø 100 h6
	B mm	M8	M10	M12	M20	M24
	C mm	15	20	25	35	40
Number of teeth	Z mm	per customer data				
Module	m	0.75	1.0	2.5	2.5	4.0
Tooth pitch	to mm	2.3562	3.1416	7.8540	7.8540	12.56637
Moment of inertia	lx mm ⁴	5677	12054	24330	352513	2569015
Moment of inertia	ly mm ⁴	7552	17856	44042	572284	4340400
Polar moment of inertia	lp mm ⁴	13230	29910	68372	924797	6909416
Weight	kg/m	2.30	3.50	5.45	19.10	52.20

Article number	SL 5.m	SL 5.0	SL 5.1	SL 5.3	SL 5.5
lean SL® Rack	500 672	500 161	500 162	500 163	500 164