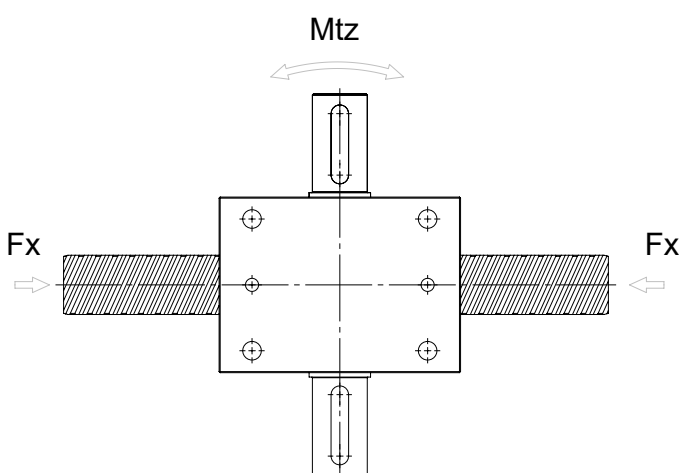
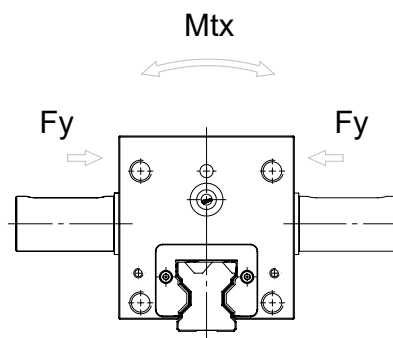
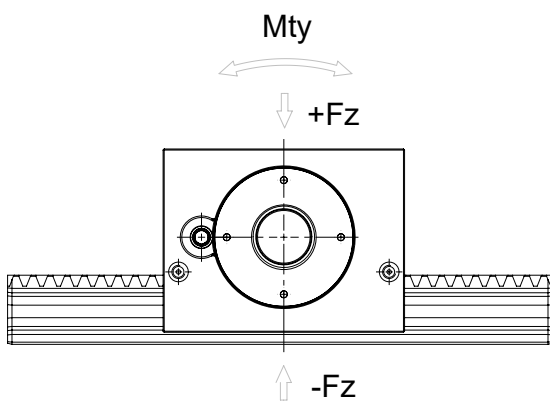


lifigo hp<sup>®</sup> 5.0 - 5.4 • Technical data

**!** Make sure that the article number refers to the correct pinion shaft version.



Video  
Functioning



Video gear rack  
installation



Installation  
instructions



CAD Data



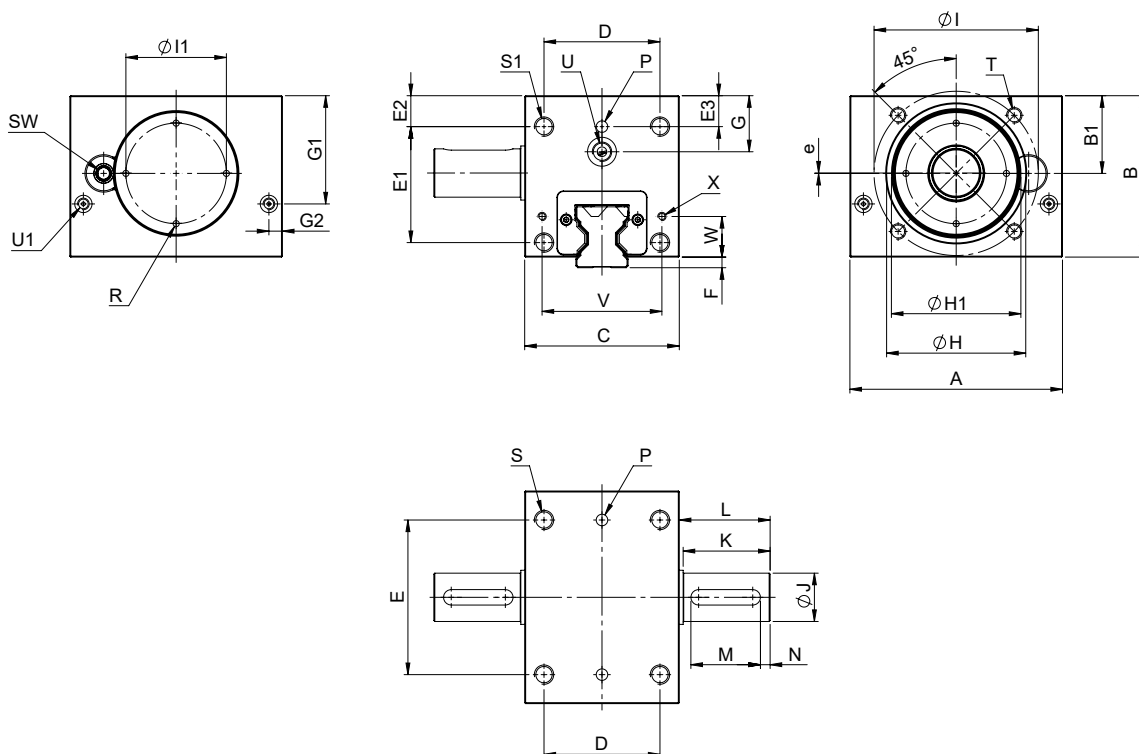
The technical data on this page apply to all versions of the lifgo hp® series.

lifgo hp® Gearbox - Technical data	Unit	5.0	5.1	5.3	5.4
Lifting power	Fmax. N	1800	3400	14400	22600
Lifting speed	vmax m/s	3	3	3	3
Acceleration	amax m/s <sup>2</sup>	50	50	50	50
Torque.	Mmax Nm	19,8	67,15	428,40	898,35
Pitch diameter	∅Tk mm	22	39,5	59,5	79,5
Lifting gear ratio	Hub mm/360°	69,1150	124,0929	186,9248	249,7566
Efficiency	w	0,92	0,92	0,92	0,92
Tooth backlash infinitely variable	f mm	0,002	0,002	0,002	0,002
Temperature resistance	T °C	+80	+80	+80	+80
Static torque	Mtx stat. Nm	570	760	4400	5500
Dynamic torque	Mtx dyn. Nm	280	390	2200	2800
	Mty stat. Nm	380	650	3300	3300
	Mty dyn Nm	180	330	1600	1600
	Mtz stat. Nm	380	650	3300	3300
	Mtz dyn Nm	180	330	1600	1600
Static load rating	F stat. N	38400	51200	161400	161400
Dynamic load rating	F dyn. N	19100	25900	79600	79600

lifgo hp® 5.0 - 5.4 • dimension sheet



! Make sure that the article number refers to the correct pinion shaft version.



 The technical data on this page apply to all versions of the lifgo hp® series.

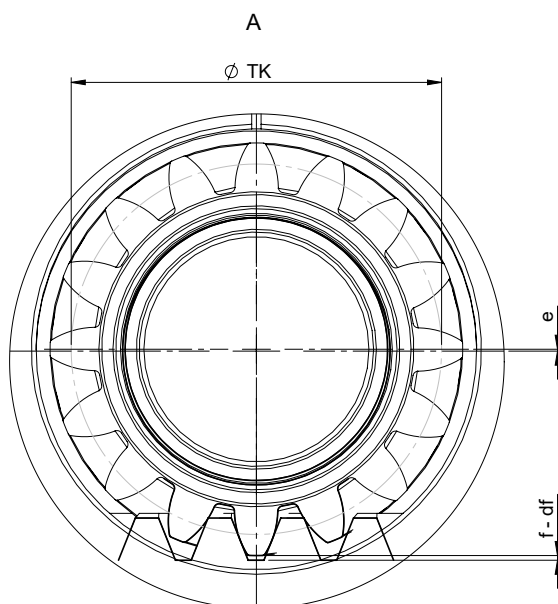
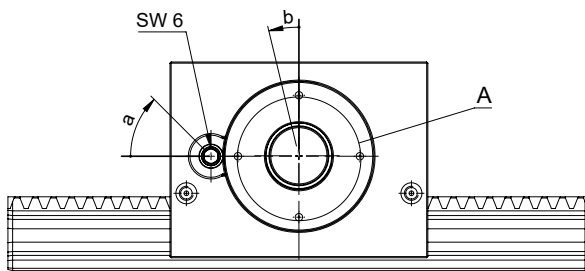
lifgo hp®	Unit	5.0	5.1	5.3	5.4
Lifter linear	A mm	110	110	180	180
	B mm	66,5	83,5	142	156
	B1 mm	34	40	60	75
	C mm	80	80	130	160
	D mm	55	60	105	130
	E mm	80	80	130	130
	E1 mm	45	60	105	120
	E2 mm	14	16	26	25
	E3 mm	10	16	26	25
	F mm	3,5	5,5	5	5
	G mm	21	29	45	60
	G1 mm	42,5	56	81,5	106,5
	G2 mm	7	7	13	13
Locating flange (remove sealed plate, when in use)	H mm	∅ 56 H7 ↓ 2	∅ 72 H7 ↓ 2	∅ 106 H7 ↓ 3	∅ 136 H7 ↓ 3
	H1 mm	∅ 51	∅ 67	∅ 99	∅ 130
	I mm	∅ 75	∅ 85	∅ 130	∅ 160
	I1 mm	∅ 32	∅ 52	∅ 82	∅ 108
KEY DIN 6885 P9	J mm	∅ 16 h7	∅ 25 h7	∅ 42 h7	∅ 55 h7
	K mm	22	45	60	80
	L mm	22	47	62	82
	M mm	14	36	50	70
	N mm	7,5	5	5	5
	P mm	∅ 6 H7 ↓ 10	∅ 6 H7 ↓ 10	∅ 6 H7 ↓ 10	∅ 6 H7 ↓ 10
	R mm	∅ 3 ↓ 3	∅ 3 ↓ 3	∅ 4 ↓ 4	∅ 4 ↓ 5
	S mm	M8 ↓ 16	M10 ↓ 20	M12 ↓ 25	M12 ↓ 25
	S1 mm	M8 ↓ 11	M10 ↓ 10	M12 ↓ 13	M12 ↓ 13
Width across flats	SW mm	6	6	6	6
	T mm	M6 ↓ 6	M8 ↓ 12	M10 ↓ 17	M10 ↓ 20
Lube hole	U mm	M10x1 ↓ 10	M10x1 ↓ 10	M10x1 ↓ 10	M10x1 ↓ 10
Lube hole	U1 mm	M6 ↓ 5	M6 ↓ 5	M6 ↓ 5	M6 ↓ 5
	V mm	58	62	100	120
	W mm	18	21	43	43
	X mm	M4 ↓ 8	M4 ↓ 8	M4 ↓ 8	M4 ↓ 8
Excenter	e mm	0,15	0,2	0,15	0,2
Weight	ZA1 kg	3,85	4,20	19,93	28,10
Weight	ZA2 kg	3,9	4,37	20,48	29,60

Article number	5.0	5.1	5.3	5.4
lifgo hp® ZA 1	501 817	501 819	501 821	501 823
lifgo hp® ZA 2	501 818	501 820	501 822	501 824

lifgo hp<sup>®</sup> 5.0 - 5.4 • dimension sheet

! Make sure that the article number refers to the correct pinion shaft version.



**!** Please note that the gearboxes of the „lifgo hp®“ version cannot be combined with standard gearboxes (centric bearing).

lifgo hp®	Unit		5.0	5.1	5.3	5.4
<b>Reduction of play</b>						
Setting shaft rotation	a	°	360	360	360	360
Revolution gearwheel	b	°	120	90	60	45
Pitch circle diameter	TK	mm	22,0	39,5	59,5	79,5
Outsourcing	e	mm	0,15	0,20	0,15	0,2
Adjustment	df	mm	$df = e \times (1 - \cos b)$			
Adjustment (bx°)	df (0°)	mm	0	0	0	0
	df (45°)	mm	0,044	0,059	0,044	0,059
	df (90°)	mm	0,150	0,200	0,150	0,200
	df (135°)	mm	0,256	0,341	0,256	0,341
	df (180°)	mm	0,300	0,400	0,300	0,400