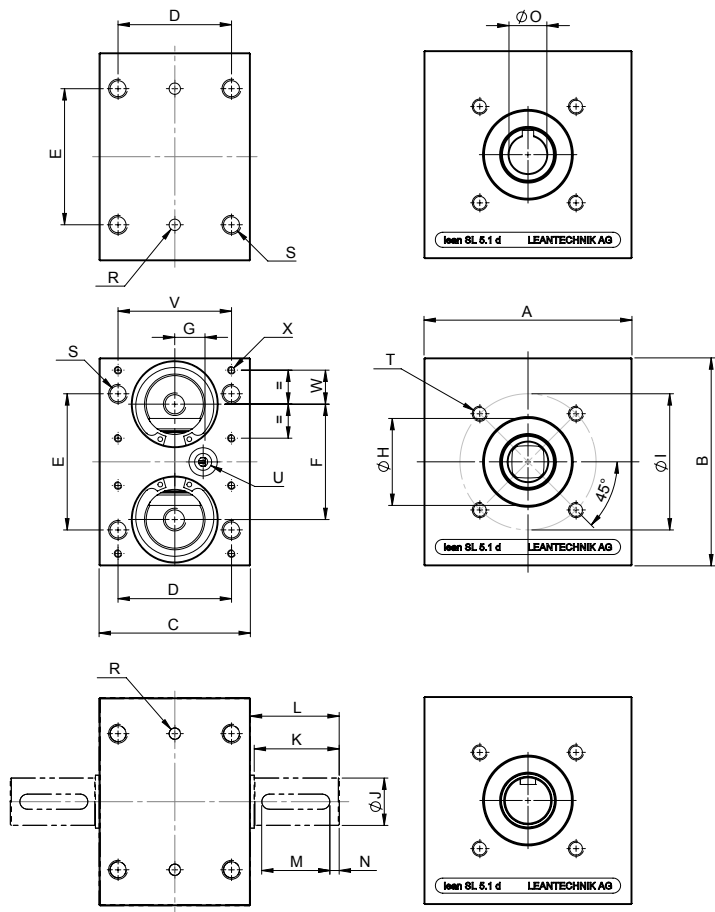


3.2.2.2 lean SL® double 5.0 – 5.3 • Dimension sheet



! Make sure that the article number refers to the correct pinion shaft version.





In the "double" version, the maximum transmitted torque is the same as for the individual gearbox.

lean SL® double	Unit	SL 5.0	SL 5.1	SL 5.3	
A	mm	80	110	180	
B	mm	80	110	180	
C	mm	70	80	130	
D	mm	55	60	105	
E	mm	50	72	120	
F	mm	38	61	99	
G	mm	20	15	15	
Centering flange (if used, remove sealing ring)	H	mm	∅ 26 K6 ↓3	∅ 47 K6 ↓4	∅ 72 K6 ↓4
	I	mm	∅ 48	∅ 72	∅ 110
Key DIN 6885 P9	J	mm	∅ 14 h7	∅ 25 h7	∅ 42 h7
	K	mm	30	45	60
	L	mm	32	47	62
	M	mm	25	36	50
Key DIN 6885 P9	N	mm	2	5	5
	O	mm	∅ 10 H7	∅ 20 H7	∅ 35 H7
	R	mm	∅ 6 H7 ↓5	∅ 6 H7 ↓3	∅ 6 H7 ↓5
	S	mm	M8 ↓16 ∅ 6,8 through	M10 ↓20 ∅ 8,5 through	M12 ↓27 ∅ 10,2 through
	T	mm	M6 ↓12	M8 ↓12	M10 ↓20
Lube hole	U	mm	M10x1 ↓10	M10x1 ↓10	M10x1 ↓10
	V	mm	52	60	100
	W	mm	15	18	35
Gear rack protection	X	mm	M4 ↓6	M4 ↓8	M4 ↓8
Weight PW		kg	0,90	2,10	8,29
Weight ZA 1		kg	1,01	2,45	10,14
Weight ZA 2		kg	1,05	2,62	10,80
Weight PFN		kg	0,93	2,07	8,50

Article number	SL 5.0	SL 5.1	SL 5.3
lean SL® double PW	500 145	500 146	500 147
lean SL® double ZA 1	500 149	500 150	500 151
lean SL® double ZA 2	500 153	500 154	500 155
lean SL® double PFN	500 157	500 158	500 159